



Randolph School District
110 Meadowood Drive
Randolph, WI 53956
(920) 326-2427
www.rsdwi.org

RANDOLPH ROCKET

Winter 2025

**An online version of this newsletter is available on the RSD website with clickable links:*

Visit www.rsdwi.org and click "Community" then click "Monthly Newsletters"

OR visit:

Volume 56, Issue 56

<https://bit.ly/RSDnewsletter>

Check Out

what's been happening and what's coming up at the Randolph Schools. For more information and to keep current, either go to our website at rsdwi.org and download the app or visit us on [Facebook](#).



Randolph School District – Upcoming Operational Referendum

Dear Randolph Community,

The Randolph School District is committed to providing the best possible education for our students while maintaining fiscal responsibility. As we prepare for the upcoming operational referendum, we want to ensure that our community is well-informed about the challenges we face and the reasons why this referendum is necessary.

Opportunities to Learn More

We invite all community members to attend our upcoming information sessions and public meetings. These sessions will provide details about the referendum, allow you to ask questions, and offer an opportunity for discussion about the future of our schools.

Radio Appearances:

- 📻 February 18 – on WBEV Radio (Beaver Dam) at 9:00 AM
- 📻 March 25 – on WBEV Radio (Beaver Dam) at 11:10 AM

Public Meetings:

- 📍 February 26 – Randolph MS/HS Library at 6:00 PM
- 📍 February 27 – Village of Randolph Committee Meeting at 6:00 PM
- 📍 March 3 – Township of Randolph at 6:00 PM
- 📍 March 3 – Township of Westford at 7:00 PM
- 📍 March 5 – During the school day at the Blood Drive
- 📍 March 5 – Courtland Township Meeting at 6:00 PM
- 📍 March 10 – Township of Fox Lake Meeting at 7:00 PM
- 📍 March 12 – Randolph MS/HS Library at 6:00 PM



Your voice matters, and we encourage you to participate in these discussions. For more information, please contact me at (920) 326-2427 x1105 or email me at zachob@rsdwi.org.

Why is This Referendum Needed?

Statewide Challenges Impacting Randolph

- ◆ **Declining State Aid** – Wisconsin's funding formula ties school aid to property values. As Randolph's property values increase, our state aid decreases, shifting more of the funding burden onto local taxpayers.
- ◆ **Revenue Limits** – Since 1993, the state has capped the revenue schools can raise, and these limits have not kept up with inflation and rising costs. Many districts across Wisconsin have turned to referendums to maintain their educational programs.
- ◆ **Rising Costs** – Salaries, utilities, transportation, and technology expenses continue to rise, while school revenue remains capped without voter approval.
- ◆ **Statewide Referendum Trend** – Over 85% of Wisconsin school districts have gone to using operational referendums. Randolph has operated within the revenue limit for 25 years but now needs voter approval to exceed it to maintain our district's programs and services.

Randolph-Specific Reasons for the Referendum



✓ **Balancing the Budget** – With declining enrollment and reduced state aid, our district is facing a funding gap. Even if the referendum passes, budget reductions will still be necessary.

✓ **Protecting Student Opportunities** – Without additional funding, academic programs, extracurricular activities, and support services may be cut, impacting student success and open enrollment interest in our district.

✓ **Recruiting & Retaining Quality Staff** – Competitive wages and benefits help us attract and keep the best educators for our students.

✓ **Maintaining Small Class Sizes & Support Services** – Without additional funding, larger class sizes and fewer student support services may become necessary.

✓ **Community Investment** – Strong schools enhance property values, attract families, and prepare students for success in college, careers, and the workforce.

Understanding Declining Enrollment

Randolph, like many Wisconsin districts, has seen a decrease in student enrollment due to several factors:

🏠 **Demographic Shifts** – Fewer births since 2007 and an aging population mean fewer school-age children.

🏠 **Impact of COVID-19** – The pandemic led to a 3% enrollment drop, with some families opting for homeschooling or private schools.

📖 **Open Enrollment & Alternative Education** – Wisconsin's open enrollment policy allows students to attend schools outside their home district, impacting local enrollment.

💰 **Economic Considerations** – Families moving to areas with lower living costs have also contributed to declining enrollment.

A Look at Randolph's Referendum History

Randolph has a history of both successful and unsuccessful referendums. Most recently, in 2015, the district passed a \$17.57 million capital referendum for facility renovations and improvements (moving to one building). However, multiple attempts in 2010 for facility projects were unsuccessful. Now, we must ask for operational funding to maintain student programs and opportunities.

We appreciate the Randolph community's continued support of our schools, and we hope you take the opportunity to attend an information session and learn more about the referendum. Your engagement is crucial in shaping the future of our district.

Sincerely,

Brian Zacho

District Administrator, Randolph School District





Hello Rocket Families:

As we are deep into the winter months, it's a great time to reflect on the progress we've made and focus on areas where we can continue to improve. This semester, our teachers are diving deeper into refining assessments, ensuring that they accurately measure student learning and promote academic growth.

As part of this effort, many of our teachers are participating in a district-wide book study of *A Repair Kit for Grading: 15 Fixes for Broken Grades* by Ken O'Connor. This insightful book helps educators reimagine grading practices to better support student achievement. It challenges traditional grading methods, encouraging a shift toward more meaningful, formative assessments that provide actionable feedback and promote student growth.

In the book study, teachers are exploring strategies to ensure that grades are more than just a reflection of a student's ability to memorize information; they should be a true reflection of learning. The strategies discussed in the book emphasize improving clarity in assessment design, reducing the impact of behavior or extra-credit assignments on grades, and ensuring that grades reflect mastery of content rather than effort or attitude alone. Teachers are excited about the potential of these fixes to better align assessments with student learning goals and provide clearer, more constructive feedback.

How Parents Can Support Student Achievement Through Good Attendance

One of the most critical factors in student success is regular school attendance. Research consistently shows that students who attend school regularly are more likely to perform well academically, develop strong relationships with peers and teachers, and feel more connected to their school community.

We encourage parents to support their children's education by making attendance a priority. Here are a few ways families can help:

- 1. **Make Attendance a Priority:** Try to avoid scheduling vacations or appointments during school hours. If an absence is necessary, make sure the student catches up on missed work promptly.
- 2. **Create a Routine:** Establishing a consistent bedtime and morning routine helps students feel rested and ready for the school day.
- 3. **Stay in Communication:** If your child is experiencing challenges that affect their attendance, please reach out to your child's teacher or the school counselor. We are here to support both students and families.

Together, we can ensure that all students have the best chance to succeed academically and develop the skills they need to thrive in the classroom and beyond.

Thank you for your continued partnership and support in creating a strong foundation for student achievement.

Warm regards,

Maria Kutzler
Middle/High School
Principal
920-382-5225
kutzlerm@rsdwi.org



The Class of 2026
(Junior Class) attended
the Wisconsin Education
Fair on Thursday,
September 26th at US-
Oshkosh.



Randolph Elementary Families-

With the start of second semester, students and staff are working hard and it shows in daily work, on report cards, and in the assessments students are taking. If you have any questions about how your child is progressing in school, please feel free to reach out to your child's teacher.

We take pride in nurturing respectful, responsible, safe, and kind learners at Randolph. One important aspect of responsibility is timely attendance in class. We understand that it can be tempting to stay cozy under warm blankets on chilly February mornings; however, the school bell rings at 8:05 a.m., and it is crucial for students to be in class and ready to learn by 8:10 a.m. While some students are successfully overcoming tardiness, others are still arriving after the morning bell. If your child is among those arriving late, please encourage them to set an earlier alarm to ensure they do not miss the initial five to ten minutes of instructional time. This brief period is vital as it allows teachers to establish the day's tone and prepare students for a productive learning experience. We recommend that students arrive by 8:00 a.m.

We are currently planning for our summer programming and would like to ask you to save the dates from June 9, 2025, to June 27, 2025. This will be a wonderful opportunity for your child to participate in both familiar and new classes. Our summer classes will span three weeks in June and will include beloved activities like Legos and robotics, along with additional reading and math opportunities. Please keep an eye on Skylert for registration details, which will be available in early April.

As always, we welcome your questions, concerns, or feedback regarding your child's learning experience this school year. Your input is invaluable to us, and we look forward to collaborating with you to support the children of Randolph.

Warm regards,

Christy Fay
Elementary Principal

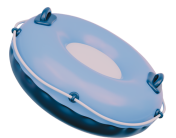


ABCDEFGHIJKLMNOPQRSTUVWXYZ ABCDEFGHIJKLMNOPQRSTUVWXYZ

*You
Earned
It
Day!*

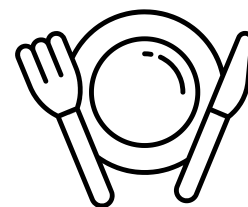


The Middle School had a great time snow tubing on Friday, January 31. They went to Sunburst Ski Hill by Kewaskum. This was a reward for those that qualified for You Earned It Day





What's Hot for Breakfast?



Dear Rocket Families-

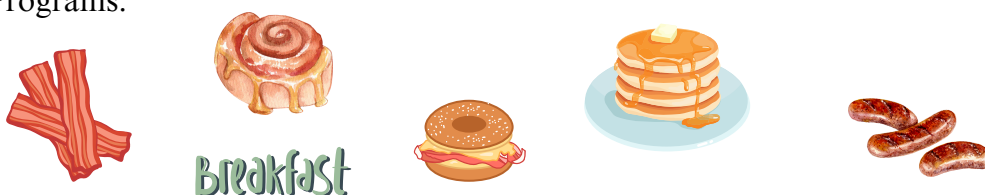
Have you seen the new hot items that we are serving your kids at breakfast? We offer these new hot breakfast items at least 4 days of the week. The hot items include a variety of breakfast sandwiches with eggs, cheese and bacon, sausage or ham on a croissant, biscuit or bagel. We serve breakfast burritos and breakfast pizza. We offer pancakes on a stick, blueberry pancakes and confetti pancakes. French toast sticks, maple waffle bites, apple filled churros and biscuits and sausage gravy. New in February we are offering a pancake breakfast sandwich with eggs and bacon, a cheesy potato breakfast bake with eggs and sausage and a flatbread taco with eggs, ham and cheese. In addition to those items we do offer cereal bars, cereal bowls and a variety of other cold items. If you are short on time in the morning or your students aren't hungry when they wake up, send them to school for a hot breakfast and let us take care of them!

Student breakfast meal price is \$1.50 and for those that are free and reduced, breakfast is free.

All families have the opportunity to complete a Free/Reduced Price Meal Application, you can find the application on the Randolph School District website.

We look forward to seeing more students at breakfast and we are committed to providing your students convenient, healthy meals. Please feel free to contact me if you have any questions about the Randolph School Breakfast and Lunch Programs.

Jill Czarnecki
Food Service Director
czarneckij@rsdwi.org
920-326-2427 x1112



Breakfast



Nurse News



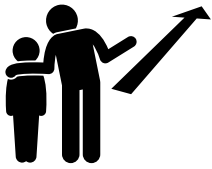
With the help of the community and the "roundup program" at Detjen's Piggly Wiggly in Randolph, and a grant awarded by the Beaver Dam Community Hospital Foundation, the District has been able to purchase all new Automated External Defibrillators (AEDs) for our building.

AEDs can help save individuals in our school and community from sudden cardiac arrest, which is one of the leading causes of death in the United States.

These devices enable us to provide immediate assistance if needed while awaiting the arrival of emergency personnel. We extend our gratitude to the Beaver Dam Community Hospital Foundation, Piggly Wiggly, and all those who contributed through their roundups at the register in October.

Pictured: Brian Zacho, RSD Superintendent; Emily Detjen, Owner, Piggly Wiggly; Kim Biel, Randolph School District Nurse

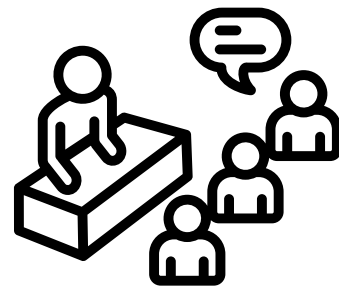




Ms. Maddie's School Counselor Corner



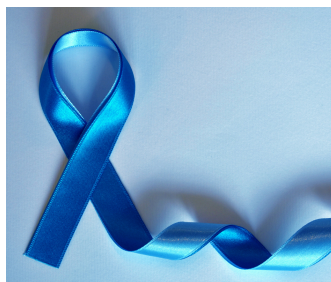
I am greatly enjoying the 2024-25 school year, and can not believe that we are already in its 3rd quarter! Kindergarten- 5th grade students have been doing a fantastic job participating and working together during our weekly GPS (Good People Skills) class. We cover topics included in the Second Step Curriculum and discuss the monthly PBIS themes. Students have completed the Empathy and Communication and Bullying Prevention Second Step Units, as well as their Safety Kids Unit where we talk about personal safety skills. Below are some pictures of our kindergarten friends with their Charlie Check First coloring pages! Elementary students will also be learning about emotion management, problem solving, and career exploration before the end of the school year.



Please keep in mind that in addition to GPS classes, I also support students with individual and small group counseling. I am happy to help with referrals to our onsite therapists through the Psychotherapy Center of Waunakee, or our new service Care Solace that can assist families with finding available mental health providers. If at any time during the school year you feel your child may need some additional care, do not hesitate to reach out!



RANDOLPH PTO PRESENTS



A Mental Health Awareness Night at Randolph School District

Randolph Varsity Boys vs. Cambria Varsity Boys

FRIDAY, FEBRUARY 21, 2025



BASKET RAFFLE



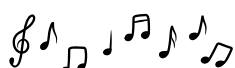
(contact Jackie Drews to donate by Thursday, February 20th)

drewsj@rsdwi.org 920.382.3586

LIGHTNING CONTEST

(@HALFTIME \$1 ENTRY FEE)

100% of proceeds will be split between the two school districts to support future mental health events, which may include; speakers, wellness activities, and educational opportunities.



Band



The HS Band is between big events right now, but is currently performing Pep Band at both Boys and Girls Basketball games. Both MS and HS Band and Choir Students are also working on music for this year's Solo Ensemble Festival. They will be performing on Feb 22 in Cambria.





The 3rd-grade students collected Valentine cards and postcards from across the United States for a project called "Hearts Around the World." It was a fun experience as we explored the locations of different states as well as learned interesting facts and information about each one.

Thank you to everyone who shared our requests with family and friends near and far!



Choir



After two successful winter concerts, the students in Randolph's Elementary and Secondary schools have been keeping very busy.

Our Kindergarten-5th graders are singing songs by The Beatles, playing ukulele and recorder and doing creative movement.

Our 6th grade choir has been learning songs from the musical "Oliver" and our 7th-12th grade students have been preparing for solo/ensemble which will be held Saturday February 22 at Cambria.

Our high school choir will be traveling to Green Lake on April 24 to participate in the large group choir concert festival and on Saturday April 26 qualifying students will participate in the state solo/ensemble contest in Oshkosh.

We are looking forward to performing for you at our Spring concerts on Tuesday, May 13, for the elementary school and Monday, May 19, for the Middle and High School!



For fun photos, Ms. Maddie and Ms. VanZeeland created a "Self-Love Selfies" photo booth along with props that could be held while getting their picture taken.



Randolph Elementary
Children's Festival



ADVENTURE
awaits



Thursday, April 10, 2025

17th annual event at the Randolph School District

4:30 p.m. to 6:30 p.m.

This event is for families with children up to age 8/3rd grade.

Come join us for:

Info from Community Agencies & Programs

Children's Games & Scholastic Book Fair

Face Painting

Petting Zoo sponsored by PTO Children's

Inflatable & Bounce House

Basket Raffle of Kids' Themed Baskets

(Proceeds will go to Randolph Pool project)

Dinner options for your family to eat at the event!

Dress Up Days

Monday, April 7:

Neon & Tye-Dye Day

Tuesday, April 8:

Color Day:

Toddlers-purple

4K-blue

K-green

1st-yellow

2nd-orange

3rd-red

Wednesday, April 9:

Favorite Character/Cartoon Shirt Day

Thursday, April 10

Travel Attire/Vacation Day

Friday, April 11:

School Spirit Day (blue & white)





February is CTE (Career Technical Education) Month



The Randolph High School CTE Team (L-R)

Mr. Darin Drews, Mrs. Amy Medema, Ms. Jenna Offerman, Mr. Eric Schwandt, Mr. Paul Logan

Badger Boys and Girls State

A program to change a lifetime, young leaders are educated on how to become more impactful community members of Wisconsin. During the program, high school students between their junior and senior years learn how our government system works by creating their own city, county, and state level governments. They "learn by doing" as they function on city, county and state levels by electing officials in the manner prescribed by regular election procedures and conducting business on those levels. Every student attending is encouraged to participate in some level of the governmental process.

Congratulations to our Badger Boys and Girls Delegates and Alternates!

L-R: Troy Logan, Brayden Smedema, Lauryn Huenink, and Lindsay Vander Galien.

**Connor Higgins is our RHS
Badger State Boy Alternate -
Congratulations, Connor!**



Second semester is in full swing and the RCF FFA is gearing up for a busy semester. Some highlights being Ag Olympics Friday, February 21st from 12:30-2:30pm, Regional and State Career Development Events in March & April, the annual FFA Banquet April 14th at 6pm, and Elementary Ag Day being planned for early May!

Upcoming Events

February 14th (Fri)

- Proficiency Applications DUE!!!!

February 16th-17th (Sun-Mon)

- FFA Day on the Hill

February 15th-22nd

- National FFA Week!!!
- Fri. Feb. 21st Ag Olympics!

March 10th (Mon)

- Section LDE

March 20th (Th)

- Regional CDE @ UW Platteville

April 14th (Mon)

- RCF FFA Banquet

May Date TBD

- Elementary Ag day



Middle School Quiz Bow

Lila S., Lydia H., Nylee C.,
Brynlee B., Claire M.



District 16 LDE

Ashton & Brielle B.

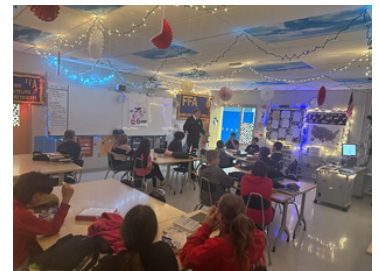


National FFA Convention Travel Group

Addison D., Piper A., Bella F., Sydnee B.,
Brielle B., Lydia V., Wyatt B., Cohen W.,
Ashton B., Jayden R.



2 STAR Chapter Award



State Officer Visit



100 First Grade Fun on the 100th Day of School 100

On February 4, the first graders celebrated the 100th day of School. Students decorated t-shirts and headbands. Students listened to a story titled, "If I Was 100 Years Old". After the story, they wrote what they would look like and what they would do if they were 100 years old. For math class, students had to search for 100 chocolate kisses and match the number on the kiss to the number on the 100 chart. They had to flip a penny 100 times and record it as heads or tails. They had to do 100 different exercises, build with 100 different objects and spell 100 words. We ended the day by having a 100 day snack.



100

Kindergarten Fun on the 100th Day of School

100

Mrs. Schumacher's Class



Ms. Bright's Class



Forensics



The Randolph High School Forensics Team has been busy with competitions over the last couple of weeks! On Monday, the Trailways North Conference Meet was held at Randolph. Six students claimed the conference title in their category: Eli Herpel (Expository), Sarah Behm (Oratory), Violet Saeman (Farrago), William Bakken (Radio), Lauryn Huenink (Moments in History), Piper Alsum (Impromptu)!

On January 25, Graycee Krahn took 1st Place in Solo Acting Serious at the Rock River Invitational in Watertown. On February 1, Karlee Baugher took 2nd Place in Oratorical Declamation and Graycee Krahn took 1st Place in Solo Acting Serious at the Sun Prairie West Invitational. At the same meet, Jack Vredevelde (Impromptu) and the trio of Sophia Mork, Alexis Vree, and Maria Vera (Play Acting) won Top Novice in their categories, a special award for first year Forensics students.

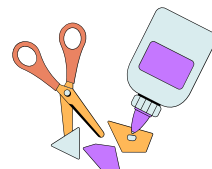




Art Club has been busy since the School's play back in November.

Since then, we have been:

- Working on helping to redesign the Randolph Police Department logo. Working with Randolph EMS and Police Department in the redesign.
- We've been working with the Randolph HS/MS Home Economics room, working to create a mural on the cabinet doors.
- Designing a T-shirt for the club.
- Building our logo portfolio up for the Randolph-Cambria merger.
- Working on painting the stools in the art room and making plans to participate with the RSD's new After School Program.



Educators Rising Club

The Educators Rising Club has been busy during the first semester of school! In the fall, we visited UW-Eau Claire, UW-Stout, and UW-Milwaukee to learn more about their teacher preparation programs. We were thrilled to sponsor a relaxed afternoon of events in honor of World Mental Health Day on October 11th for our high school students. They decorated cookies, did yoga, colored, played trivia, and burned off some energy playing dodgeball. We also want to give a HUGE shout out to all of the 9-12 teachers who helped run this event - it would not have been possible without you!

Our club also took a fantastic tour of Inspire Early Learning Childhood Center in Waunakee, WI.

More than half of our club members volunteered to run the Gingerbread dance during the Holiday Parade of Lights, then we bundled up and marched in the parade throwing candy to happy viewers!

Coming up, all club students will attend the annual Educators Rising State Summit Conference at UW-Stevens Point on Friday March, 7. Additionally, we will have 14 students competing in __ different categories there. Please wish the following students luck on the academic competition: Elizabeth Follow, Vanessa Blanchard, Tessa Sadoski, Ava Schmit, Alyssa De Vries, Karlys Arjona, Jake Dallman, Eli Herpel, William Bakken, Brandon Alva-Fuertes, Jennifer Kossow, Nevaeh Rausch, Owen Summers, and Miley Lenz!

In the spring, we are looking forward to helping out at Title I Family Night, and running a fun sensory bin prize dig at the Children's Festival. If you have any questions or would like to ask our club to volunteer at an event, please reach out to the advisor at: DaughertyJ@rsdwi.org.



R-E-S-O-L-V-E

RANDOLPH ELEMENTARY STUDENTS OFFERING LOVE & VOLUNTEER EFFORTS

In November of 2024, students volunteered to "RESOLVE" to fight Autism Spectrum Disorder. On January 10, 2025 our students celebrated their fundraising efforts at an assembly.



Pictured above are the student volunteers that raised money for RESOLVE. 66 participants in all. These students raised a total of \$8,964.80!

Top 3 Collectors:

Oscar Meagher: \$501
Bo Moldenhauer: \$665
Kairi Harvey: \$2,470

Left to Right: Back row: Oscar Meagher & Grace Meyer (\$250);
Front Row: Sophie Pluskota (\$250), Bo Moldenhauer, Kairi Harvey, Louis Jung (\$407), Elizabeth Kela (\$250)



Bo and Kairi are the student representatives of this year's event that includes all students diagnosed with ASD. Loving, kind, caring ambassadors!



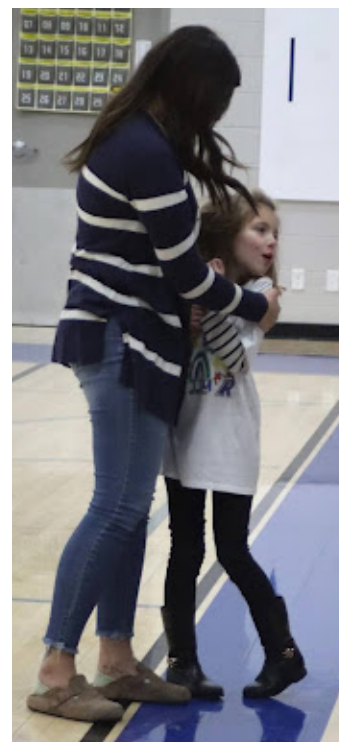
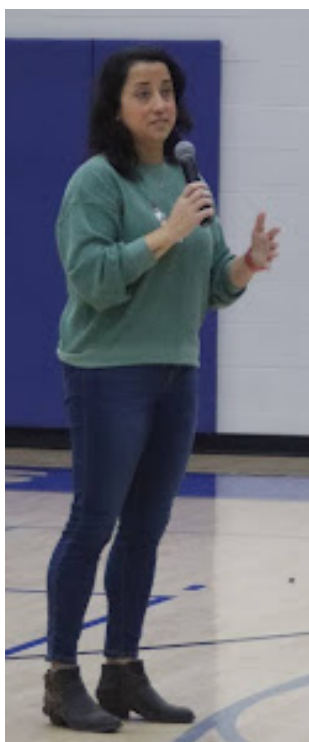
A plaque commemorating this year's RESOLVE event will hang on the wall outside of the elementary office. A reminder of our fight as well the power of volunteerism & philanthropy.



RESOLVE is a PTO sponsored event. The PTO receives 25% of the profits which helps to support programs and activities for the students and staff in the Randolph School District. 75% of the proceeds (\$5,550.00) went to the Autism Society of Southeastern Wisconsin. It is their mission to improve the quality of life for each child, teen, and adult on the Autism spectrum.

Autism is the fastest-growing developmental disability in the United States. 1 in 36 children are diagnosed with Autism spectrum disorder. Since 1965, they have been connecting people to the resources they need. There's no known cause of Autism and no cure.

At the Assembly the Harvey and Moldenhauer families joined us in our celebrations with "the moms" (Stephanie Harvey & Stephanie Moldenhauer) sharing words of deep gratitude for the students' efforts, love, and support. Second grade teacher, Mrs. Kroepel thanked our top fundraiser, Kairi Harvey for inviting her to her VIP lunch and described the beautiful person she is.



THANK YOU to:

Kairi Harvey & Bo Moldenhauer for being our representatives among our school family that includes other students with ASD.

The Harvey and the Moldenhauer families for sharing their story.

All the students who volunteered and the staff, family, and community that supported their efforts.

The RESOLVE committee members: Mrs. Baugher, Mrs. Drews, Mrs. Emmerich,

Ms.Gorr, Mr. Nelson, Mrs. Otto, & Mrs. Schumacher, & Mrs. Swanson

Mrs. Greeno (photography)

Wausau Awards and Engraving (discounted plaque)

Sydney Boomsma (assembly technology)

43 YEARS of History:

<u>R-E-S-O-L-V-E</u>			
<u>Randolph Elementary Students Offering Love & Volunteer Efforts</u>			
<u>Year</u>		<u>Recipient (25% to PTO)</u>	<u>\$ Raised</u>
37	2018-19	Global = National Fallen Firefighters Foundation Local = Randolph Fire Department Dedication = Wayne & Linda Vanderploeg	\$9,212.07
38	2019-20	Global & Local = Patriot K9s of Wisconsin Dedication = None	\$10,136.97
39	2020-21	Global & Local = Fanconi Anemia Research Fund Dedication = Brett & Michael Johnson	\$2,735.00
40	2021-22	Global and Local = Leukemia & Lymphoma Society Dedication = Liam Sanborn	\$9,099.83
41	2022-23	Global and Local = Juvenile Diabetes Research Foundation Dedication = Kiley Bryant and Caleb Lessor	\$6,881.00
42	2023-24	Global and Local = Alzheimer's Association Dedication = None	\$6,506.00
43	2024-25	Global & Local = Autism Society of Southeastern Wisconsin Dedication: Kairi Harvey & Bo Moldenhauer	\$8,964.80
<u>R-E-S-O-L-V-E Total</u>			<u>\$53,535.67</u>
<u>36 Year JRFH & HFH Total</u>			<u>\$258,955.99</u>
<u>GRAND Total</u>			<u>\$312,491.66</u>

PLEASE JOIN US FOR OUR 2025-26 EVENT NEXT SCHOOL YEAR!
(Recipient to be determined.)

RANDOLPH PTO NEWS

FEBRUARY 2025

Snowflake Dance - SUCCESS!

Thank you DJ Swany for all you did to make the Snowflake Dance a huge success. We raised \$325 to put towards a new piece of playground equipment. Please see our Facebook page for some pictures taken at the dance. Shout out to the chaperones who also make this dance possible each year.

Employee Spotlight

Each Wednesday, a staff member is featured on the Randolph School District Facebook page. The PTO is offering each Staff Spotlight a \$10 Scrip Card of their choice. Thanks for all you do for the school district!!

Upcoming Events

February 21: Mental Health Night
February 24: PTO Meeting - 4:00

Mental Health Awareness Night

The PTO is sponsoring this night at a Basketball Game on Friday, February 21st. If you are interested in donating a basket, please contact Jackie Drews at drewsj@rsdwi.org. Baskets to be dropped off by February 20 in RHS office.

Scrip Cards

One of the easiest ways to support the Randolph PTO is thru purchasing scrip cards to stores you already shop at.

We have a nice variety on hand for your shopping needs. Just email us!!

Contact Info

email: ptor@rsdwi.org

scrip email: bahrju@rsdwi.org

Randolph PTO is looking for your help! We have 2 large projects to fund, and we can't do it without you!

In an effort to continue to support the ongoing things we do within the district, we are looking for additional financial support to be able to purchase a climbing dome for the elementary playground and a refrigerated vending machine for after school activity use. While the Snowflake Dance brought in over \$300 of much-appreciated donations, both of these items cost several thousand dollars.

The climbing dome will be powder coated (at an added expense) to prevent it from becoming hot to the touch (as is our other equipment). The vending machine will be available after school hours, particularly for those students and staff who are here on afternoons and evenings that concessions aren't available. Once the machine is purchased, this will be managed by the Food Service Staff and proceeds stay within the district.

If you are willing to help, donations can be sent to either school office in an envelope marked for PTO. Checks should be made payable to Randolph PTO. Unfortunately, we are not taking electronic payments at this time. Please email ptor@rsdwi.org if you have any questions. If you are a business owner, or know of a business owner who would like to partner in making a donation, we would love to discuss a donation with you!

Family Order Form

Online Enrollment Code: F27DA16F296L1

Randolph School District - PTO

Orders are due by the end of the day on the 10th of each month.

Name	Customer #
Check #	Order Date

Product	%	QTY	Total	Product	%	QTY	Total	Product	%	QTY	Total
Aeropostale \$25.00	10%		\$	Cold Stone Creamery \$10.00	11%		\$	Hotels.com \$100.00	6%		\$
Amazon \$100.00	1.6%		\$	Cold Stone Creamery \$25.00	11%		\$	IHOP \$25.00	8%		\$
Amazon \$25.00	1.6%		\$	Columbia Sportswear \$50.00	12%		\$	Instacart \$100.00	5%		\$
Amazon \$50.00	1.6%		\$	Cousins Subs \$10.00	9%		\$	Instacart \$25.00	5%		\$
American Eagle® \$25.00	10%		\$	Cracker Barrel \$10.00	8%		\$	JCPenney \$25.00	7%		\$
Applebee's® \$25.00	8%		\$	Crate & Barrel \$25.00	8%		\$	Jiffy Lube \$30.00	8%		\$
Applebee's® \$50.00	8%		\$	CVS Pharmacy \$25.00	7%		\$	Jimmy John's \$25.00	8%		\$
Arby's \$10.00	8%		\$	Dairy Queen \$10.00	6.5%		\$	Journeys \$25.00	10%		\$
Arby's \$25.00	8%		\$	Dairy Queen \$25.00	6.5%		\$	Kentucky Fried Chicken \$10.00	6%		\$
Banana Republic \$25.00	14%		\$	Darden Restaurants \$25.00	8%		\$	Kohl's \$100.00	7%		\$
Barnes & Noble \$10.00	8%		\$	Dave & Buster's \$25.00	13%		\$	Kohl's \$25.00	7%		\$
Bath & Body Works \$10.00	12%		\$	Denny's \$10.00	7%		\$	Krispy Kreme® Doughnut Corporation \$10.00	8%		\$
Bath & Body Works \$25.00	12%		\$	Disney \$100.00	3%		\$	Kwik Trip \$100.00	4%		\$
Bonefish Grill \$25.00	10%		\$	Disney \$25.00	3%		\$	Kwik Trip \$25.00	4%		\$
Buffalo Wild Wings® \$10.00	8%		\$	Domino's \$10.00	8%		\$	Kwik Trip \$50.00	4%		\$
Buffalo Wild Wings® \$25.00	8%		\$	Domino's \$25.00	8%		\$	L.L.Bean \$25.00	16%		\$
Burger King \$10.00	6%		\$	Dunham's Sports \$25.00	8%		\$	Lands' End \$25.00	14%		\$
Burger King \$25.00	6%		\$	Dunkin' \$10.00	3.5%		\$	Marathon \$25.00	3%		\$
Cabela's \$100.00	9%		\$	Dunkin' \$25.00	3.5%		\$	Marcus Theatres \$25.00	8%		\$
Cabela's \$25.00	9%		\$	Einstein Bros. Bagels \$10.00	10%		\$	Marshalls \$100.00	6%		\$
Cascading Card File \$3.00	25%		\$	Five Below \$25.00	2.5%		\$	Marshalls \$25.00	6%		\$
Casey's \$25.00	3%		\$	Fleet Farm \$100.00	3.5%		\$	Maurices \$20.00	7%		\$
Casey's \$50.00	3%		\$	Fleet Farm \$25.00	3.5%		\$	McDonald's \$10.00	3%		\$
Cenex \$25.00	3%		\$	Foot Locker \$25.00	8%		\$	McDonald's \$25.00	3%		\$
Champs Sports \$25.00	8%		\$	GameStop \$25.00	5%		\$	Meijer \$25.00	3%		\$
Cheesecake Factory \$25.00	5%		\$	Gap \$25.00	14%		\$	Menards \$25.00	3%		\$
Chewy \$25.00	5%		\$	Golf Galaxy \$25.00	8%		\$	Nike \$25.00	11%		\$
Children's Place \$25.00	12%		\$	Google Play \$25.00	3%		\$	Noodles & Company \$10.00	8%		\$
Chili's Grill & Bar \$25.00	10%		\$	Hardee's \$10.00	5%		\$	NOOK by Barnes & Noble \$10.00	8%		\$
Chipotle Mexican Grill \$10.00	9%		\$	Hardee's \$25.00	5%		\$	Old Navy \$100.00	14%		\$
Chipotle Mexican Grill \$25.00	9%		\$	Home Depot® \$100.00	4%		\$	Old Navy \$25.00	14%		\$
Cinnabon \$25.00	7%		\$	Home Depot® \$25.00	4%		\$	Olive Garden \$25.00	8%		\$
Claire's \$10.00	9%		\$	HomeGoods \$100.00	6%		\$	Omaha Steaks \$25.00	11%		\$
				HomeGoods \$25.00	6%		\$	On The Border \$25.00	10%		\$

Make Checks Payable To: *Randolph PTO*

Total Due All Columns: \$



NOTICE OF ELECTION OF SCHOOL BOARD MEMBERS (S.120.06(8)(c) Wisconsin Statutes



NOTICE IS HEREBY GIVEN to the qualified electors of the Randolph School District that on Tuesday, April 1, 2025, an election of school board members will be held.

Candidates for the school board are as follows:

MIKE BIEL
WAYNE VANDERPLOEG
JOHN STAMPFLI

Office Terms

The top two (2) vote getters will receive a three (3) – year term, April 28, 2025 – April 23, 2028. The third (3rd) vote getter will receive a one (1) year term, which expires April 26, 2026. A description of the school district boundaries can be obtained in the district office of the Randolph School District.

Electors will vote in their regular polling places. Polls will be open at 7:00 a.m. and close at 8:00 p.m.

Dated this twelfth day of February, 2025.

BARBARA BRAKER
SCHOOL DISTRICT CLERK

OPEN ENROLLMENT FOR 2025-2026

Open enrollment allows parents to apply for their children to attend public school in a district in which they do not reside. Parents can apply during the regular open enrollment application period for the 2025-2026 school year until April 30 at 4:00 pm. Late applications cannot and will not be accepted.

Information regarding open enrollment, including the online application, can be found on the Wisconsin Department of Public Instruction website at dpi.wi.gov/open-enrollment.

Existing Open-Enrolled students attending Randolph School District will not need to Open-Enroll for the 25-26 school year. The previous approval continues from year to year, including the upcoming school year, as our policy does not require annual Open Enrollment applications.

Please contact Donna Waterworth at waterworthd@rsdwi.org or 920-326-2427 if you have questions about the open enrollment process.

Regular School Board meetings are now being held on the third Wednesday of the month in the Middle School/High School library at 6:00 pm. Agendas for these meetings are posted at the Randolph National Exchange Bank, the Randolph Horicon Bank, Piggly Wiggly, the Post Office, the Randolph School District office vestibule and the Randolph School District website.

This newsletter includes only a small sample of all the good things happening at the Randolph School District. Be sure and visit our [Facebook](#) page to see more.

Randolph Board of Education

Wayne Vanderploeg, President
Gary DeVries, Vice President
Mike Biel, Treasurer
Barb Braker, Clerk
Rich Hiley, Member
Keith Medema, Member
Josh Jens, Member
District Administrator:
Brian Zacho