



Randolph School District
110 Meadowood Drive
Randolph, WI 53956
(920) 326-2427
www.rsdwi.org

RANDOLPH ROCKET

February 2021



Dates to Remember:

NO SCHOOL - TEACHER IN-SERVICE

Friday, February 19, 2021



The Randolph Rocket is published by the Randolph School District for the purpose of informing district residents about issues, challenges, and successes of the students and staff of the district.

Randolph School District	Website: www.rsdwi.org
110 Meadowood Drive	Phone: 920/326-2427
Randolph, WI 53956	Fax: 920/326-2439

Volume 52, Number 33 February, 2021

The Randolph School District is committed to the policy that all persons shall have equal access to its programs, facilities, and employment without discrimination on the basis of age, sex, race, national origin, ancestry, creed, pregnancy, marital or parental status, veteran status, sexual orientation, or physical, mental, emotional, or learning disability or handicap in its education programs or activities. Federal law prohibits discrimination on the basis of age, race, color, national origin, sex, religion or handicap.

RANDOLPH

Board of Education Information

Mr. Keith Medema, President
Mr. Gary DeVries, Vice President
Mr. Wayne Vanderploeg, Treasurer
Mrs. Amanda Meyer, Clerk
Mr. Ty Breitlow, District Administrator

Mrs. Laurie Boomsma, Member
Mr. Allen Drews, Member
Mr. Keith Gundlach, Member

Regular School Board Meetings are usually held on the third Monday of the month in the High School Library at 6:30 p.m. Agendas for these meetings are posted at the Randolph Village Hall, National Exchange Bank in Randolph, Randolph Hometown Pharmacy, and the Randolph District Office School Entrance.

Randolph Elementary School - Ms. Christy Fay

Randolph Grade School Families-
(Cold Weather, Warm thoughts)

Our elementary students finished the first semester and we are happy to welcome back any students that were previously virtual. Report cards were recently posted. If you have a concern or question about your child's progress, please contact the classroom teacher for a virtual conversation or phone call. As partners in education, we look forward to serving Randolph School District families for the upcoming semester and beyond.

As I look out the window at blowing snow and temperatures near zero, it is a good time to send a reminder that students should be coming to school with appropriate winter gear as we will go outside for recess unless the temperatures are below zero. Students are reminded that gloves, hats and mittens are as essential as coats, snow pants and boots. We regularly have a number of students asking for loaner mittens.

The mornings are especially chilly for walkers. Please do not send or drop off students prior to 7:45 a.m. as we don't want them to be outside in the below zero weather and we do not have supervision available prior to 7:45 a.m. inside the building. If the bus comes before 7:45 a.m., students remain on the warm bus until school building doors open at 7:45 a.m.

Finally, as we enter the coldest part of winter, we have already begun discussions about summer programming. Toward the end of March, watch for summer school information outlining offerings for Summer 2021. Together we are making this school year a success for all. Thank you for all the ways you support our school district.

Christy Fay
Elementary Principal and Special Education Director

February ♥



Randolph Middle/High School - Mr. Andy Kohn

Hello Rocket Nation,

I want to again thank you for your hard work and support as we educate our students during this pandemic. The start of the second semester feels like a fresh start as we welcome back our in-person students to 5 days a week. We are very excited to see our students everyday again. Virtual students will continue to attend their classes Live through Google Classroom. I know it's been a difficult 9 months, but we will continue to work diligently on recovering students' content and credit throughout the year. I encourage you to stay engaged in your child's education, working closely with the teachers as we prepare them for their future.

Thank you for your support in your child's education.
Go Rockets,

Mr. Kohn
Middle/High School Principal

PRESCHOOL SCREENING



Friday, February 12, 2021

The Randolph School District will be conducting a screening for preschool children living in the Randolph School District who will be three or four years old on or before September 1, 2021. The screening will take place at the Randolph Elementary School, located at 110 Meadowood Drive on Friday, February 12, 2021. Please park on the south end of the building, near the basketball courts/baseball diamond and enter through the elementary entrance door #11. Parents of all four-year-old children were sent a letter with a scheduled screening appointment. Parents of three-year-old children are welcome to schedule an appointment (not required, but encouraged) by contacting the elementary office at (920) 326-2431.

The purpose of the screening is to identify any health-related problems that could interfere with success in school. The screening can also identify developmental delays that could impact adjustment to the school setting. Studies have found that helping children at an early age produces the best outcomes for children and their families versus waiting until the child enters school. Recommendations and referrals will be provided to parents as needed.

Parents, please bring your child's birth certificate (required for identification), baby book, and completed immunization record (or immunization record printed from the Wisconsin Immunization Registry website). Parents should return the Ages & Stages Questionnaire and Child Development Review sheets by February 1st in the envelope provided. After completion of the screening process, you will receive the results. Should you have a conflict with the schedule or have any questions, please contact the elementary school office at (920) 326-2431. If there is a delayed start or a snow day, the district will contact you to reschedule the screening.

If you are a parent of a child who will be three or four years old on or before September 1, 2021, and have not received information, please contact the Randolph Elementary School office at (920) 326-2431, ext. 2120. Nonresident families planning to open enroll their 4-year-old in Randolph Elementary School for the 2021-2022 school year should contact their "resident" district to schedule preschool screening.



High School Counseling Corner - Amy Medema



HIGH SCHOOL STUDENT AND PARENT INFORMATION

Mrs. Medema has announcements and high school student resources in her monthly Newsletter.

<https://docs.google.com/document/d/1iqjs4crG6AyVNd53ugAc5M1ohh-zhYCFksDp6nU05bs/edit?usp=sharing>

Website: <https://www.rsdwi.org/schools/high/counseling.cfm>

WHAT'S INSIDE:

- Scholarship Information
- 2021-2022 Course Information
- Junior's ACT Exam
- Financial Aid - FASA
- Skyward - Grade Check
- Student Job Opportunities
- Family Resources
- Early College Credit Program or Start College Now
- Senior/Junior Post-Secondary Interview
- NCAA Eligibility Center
- Parchment Transcript Requests
- Freshman Virtual Orientation
- Class of 2025 (This year's 8th Graders)

Scan with your camera for quick access.



WHAT DOES A SCHOOL COUNSELOR DO? <small>ON KANETIC Key</small>	INDIVIDUAL STUDENT PLANNING Help students evaluate their own interests, abilities, and skills. Help students develop personal goals. Help students create plans for their future.	INDIRECT SERVICES Make referrals for outside counseling or assistance. Consult with parents and teachers to share effective strategies that support students. Collaborate with parents, professionals, and community members to support student success.
	CORE CURRICULUM Evaluate school and student data and outcomes. Develop core curriculum to address desired student competencies. Deliver curriculum systematically through classroom lessons in cooperation with classroom teachers.	RESPONSIVE SERVICES Individual counseling. Small group counseling. Crisis response services.

NOTICE OF ELECTION OF SCHOOL BOARD MEMBERS

(S. 120.06(8)(c), Wis. Stats.)

Notice is hereby given to the qualified electors of the Randolph School District that on Tuesday, April 6, 2021, an election of school board members will be held. Candidates for the school board are as follows:

Vote for not more than two:

Barbara Braker	_____
Gary DeVries	_____
Tim Meyer	_____
Steve Rodriguez	_____

Electors will vote in their regular polling places:

- Village of Randolph (East & West Wards)
- Township of Fox Lake
- Township of Westford
- Township of Calamus
- Township of Randolph
- Township of Courtland
- Township of Fountain Prairie

Randolph Municipal Building, 248 West Stroud Street, Randolph
 Fox Lake Town Hall, W10543 County Highway F, Fox Lake
 Westford Town Hall, W11101 County Highway G, Beaver Dam
 Calamus Town Hall, W9820 County Highway D, Beaver Dam
 Randolph Town Hall, 109 South Madison St., Friesland
 Courtland Town Hall, W1999 County Highway A, Randolph
 Fountain Prairie Town Hall, W1514 County Highway Z, Fall River

Polls will be open at 7 o'clock a.m. and close at 8 o'clock p.m.

Dated this 7th day of January, 2021

Amanda Meyer, School District Clerk, Randolph School District

Scan with your camera for quick access.



RANDOLPH SCHOOL DISTRICT APPAREL 2021 - SPRING ORDER



You can now purchase your items online in 3 easy steps:

1. Scan the QR Code or go online to <https://randolphrockets-21.itemorder.com/sale>
2. Choose your items and add them to your cart
3. Securely checkout with your credit card

Online Store Deadline: Monday, February 22, 2021 (11:59 pm CDT)

Questions?
 John Viles
 608-274-1353
 johnv@bsgsports.com
<http://bsgsports.com>



Check out more items at the FULL store online!



Looking for Part-Time School Bus drivers to join Randolph School District.

Flexible part-time hours for field trips, sports events, and sub a bus route.

Responsibilities of School Bus Driver:

- Safely transports passengers
- Perform pre/post trip vehicle inspections
- Assists students in the loading and unloading
- Able to follow schedules

Drivers must have or be able to obtain and maintain a valid Commercial Driver's License (CDL) with school bus (S) and (P) endorsement from the Department of Transportation (DOT). Training can be available.

Pay based on experience, to be determined. Applications can be found on our website <https://www.rsdwi.org/district/employment-opportunities.cfm> or in the District Office.

For more information and questions please contact:
 Charles Drews, District Maintenance/Mechanic
 920-326-2427 ext. 1355
 Randolph School District

\$500 Signing Bonus

Ask for Details



RANDOLPH SCHOOL DISTRICT

We can make a difference in your child's education, and we are delighted that you are considering Randolph School District for your family's education. We understand the greatness of this decision for the most precious people in your life; your children.

Randolph prides itself in providing a high-quality education and co-curricular programming for children in grade PK-12. From our high scores on the Wisconsin School Report Card to our continued successes in State and National FFA to our history of athletic excellence, all speak volumes about the pride and culture of our school district and community.

Our Wisconsin School Report Card score has consistently placed us as one of the top-performing school districts in the area. The Randolph students, staff, and administrative team have worked very hard to "exceed expectations" in post-secondary readiness, closing achievement gaps, and district growth. Call now for a tour to come see for yourself!

Ty Breitlow, District Administrator
Randolph School District
110 Meadowood Drive
Randolph, WI 53956
(920) 326-2427
www.rsdwi.org

Open Enrollment
February 1 - April 30, 2021

For more information and application materials:
<https://dpi.wi.gov/open-enrollment>



Open Enrollment for 2021-2022

February 1 - April 30, 2021

Parents interested in open enrolling their children into the Randolph School District, or any Wisconsin school district, may apply from February 1, 2021, until 4:00 p.m. on April 30, 2021.

- On-line at <http://dpi.wi.gov/oe>.

Please call the district office at (920) 326-2427, ext. 1103, to answer any Open Enrollment questions you may have or you may view this link to [2020-2021 Open Enrollment Brochure](#).

<https://dpi.wi.gov/sites/default/files/imce/open-enrollment/pdf/oe-brochure-2021-22.pdf>

Pizza Party Winners - 4th Grade Mrs. Otto's Class



Mrs. Otto's 4th grade class won an online reading competition on a program called Achieve and received a \$25 VISA gift card. They decided to use their reward to have a Domino's pizza party!



Winter Weather Conditions - Closings and Delays



During times of inclement weather conditions, the Randolph School District follows guideline closed; always based on student safety, we try to make the best decision for all students.

Randolph School District personnel continuously reviews weather conditions to make the best decision based on numerous factors. After consulting the weather stations, the Village of Randolph, Dodge and Columbia Highway departments, and local law enforcement, calls are made to the area school districts and a decision to hold, delay or close school is made.

If a school delay is warranted, the school will begin two hours later than normal time and morning Pre-Kindergarten and Early Childhood classes will be canceled. If school has begun and an early school closing is warranted, there will be no afternoon Pre-Kindergarten, which will be communicated with families on a district-wide level at the time of the event.

Parents/guardians will receive an email, call or text through our Skylert automated messenger system notifying them of a school delay or cancellation. Then, this decision is communicated to local radio stations, TV stations (WISC 3, WMTV 15 and WKOW 27), and our Randolph School District Facebook page for information regarding school closings or delays.

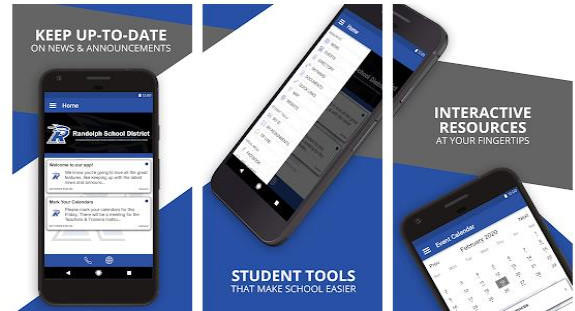
Did You Know... Randolph School District Has an App!

Go to the Google Play Store or the Mac OS App Store to search "Randolph School District" from your phone to download the app to get Up-To-Date news and announcements.



Randolph School District

AIS Developers, LLC Education



Live Stream Athletic Events

Randolph School District is excited to announce that we will be streaming athletic events for all of Rocket Nation. Event broadcast links can be found on our website anytime - located in the dropdown of the Activities tab, "Live Stream Events." The event links take you to YouTube RSD's Live page. With the reduction in seating capacity for spectators, everyone can still enjoy all the action. Feel free to subscribe to the RSD Live Page for notification when we go live. Go Rockets!
<https://www.rsdwi.org/activities/live-stream->

- Jan. 25, 6:00pm RSD BBB vs. Montello
- Jan. 28, 4:30pm MS GBB/GBB vs. Pardeeville/North Fond du Lac
- Jan. 30, 6:00pm RSD GBB vs. Hustisford
- Feb. 1, 6:00pm RSD GBB vs. Mayville
- Feb. 4, 4:30pm MS GBB/GBB vs. Fall River/Pardeeville
- Feb. 5, 6:00pm BBB vs. Rio
- Feb. 11, 4:30pm BBB vs. Pardeeville
- Feb. 16, 4:30pm MS GBB vs. Randolph Christian
- Feb. 22, 4:30pm MS GBB vs. Green Lake/Princeton

We Are On Facebook and Twitter, Don't Miss Out!



Randolph School District
Randolph High School Athletics
Randolph PTO



@RocketsRSD
@RocketsRandolph

For the most updated event schedules visit the Randolph School District website under the District Tab, then Calendars. <https://www.rsdwi.org/district/calendar.cfm>

School Nurse Information - Mrs. Katie Breitlow



Dear Parents/Guardians,

Please see below "Make Sure Their Eyes Are Ready". This is a wonderful tool to use at home to screen for suspected vision problems. I am also available for individual referrals if you have any vision/hearing concerns for your child. Please do not hesitate to contact me if you have any questions or concerns.

Make Sure Their Eyes Are Ready

Healthy vision is important for learning and success in school. 1 in 20 preschoolers and 1 in 4 school-aged children has a vision problem, and you may not even know it! Sometimes children have trouble seeing and don't even realize they are seeing the world differently than others. Children with vision problems may misbehave because it is hard for them to see to learn. In order to catch these problems early, Prevent Blindness Wisconsin recommends a complete vision screening every year for children between the ages 3 and 6, and at ages 8, 10, 12, 15, and 18. There are some things that you may notice as a parent. Read and answer the following questions about your child:

Appearance Questions

1. Do your child's eyes not fully line up, cross in, or turn out? YES NO
2. Are your child's eyes red, encrusted, or swollen? YES NO
3. Are your child's eyes watery or itchy? YES NO
4. Do your child's eyes not fully open? YES NO



Behavior Questions

5. Does your child rub their eyes a lot? YES NO
6. Does your child close or cover one eye when looking at something far away? YES NO
7. Does your child tilt their head when trying to see or read something far away? YES NO
8. Does your child squint or frown when trying to see far away? YES NO
9. Does your child blink more than normal? YES NO
10. Does your child hold books close to their face? YES NO
11. Does your child sit close to the TV or computer? YES NO

Complaint Questions

12. Does your child say "it's too blurry"? YES NO
13. Does your child say "my eyes hurt/burn"? YES NO
14. Does your child say "I feel dizzy/sick/ I have a headache"? YES NO

If you answered "yes" to any of these questions, please make an eye doctor appointment for your child. Guides to local eye doctors are available on wisconsin.preventblindness.org or ask your child's school nurse for help!

What to do if You Suspect a Problem

1. If you have a private vision insurance plan – please contact your plan's Member Services to find an eye doctor.
2. If you have BadgerCare Plus (Medicaid) – please contact Member Services at 1-800-362-3002 or at memberservice@wisconsin.gov. OR
If your child does not have an HMO, you do not know your child's HMO, or your child is not currently enrolled in BadgerCare Plus, please contact your local BadgerCare Plus Consortium Office, listed below, for assistance.
3. If you cannot afford vision care or glasses, financial assistance may be available. See our voucher criteria below.

Voucher Program Criteria Includes:

- Family income is at or below 200% of the poverty level (if your family meets the criteria for free and reduced lunch, you will qualify)
- The child is not covered by Medicaid or any other vision insurance
- The child is 19 years old or younger and has not graduated high school
- The child has not used a voucher during the last 12 months

***If you would like more information about getting a voucher, please contact your school nurse or Prevent Blindness Wisconsin at 414-765-0505.**

School Nurse Information - Mrs. Katie Breitlow (Continued)

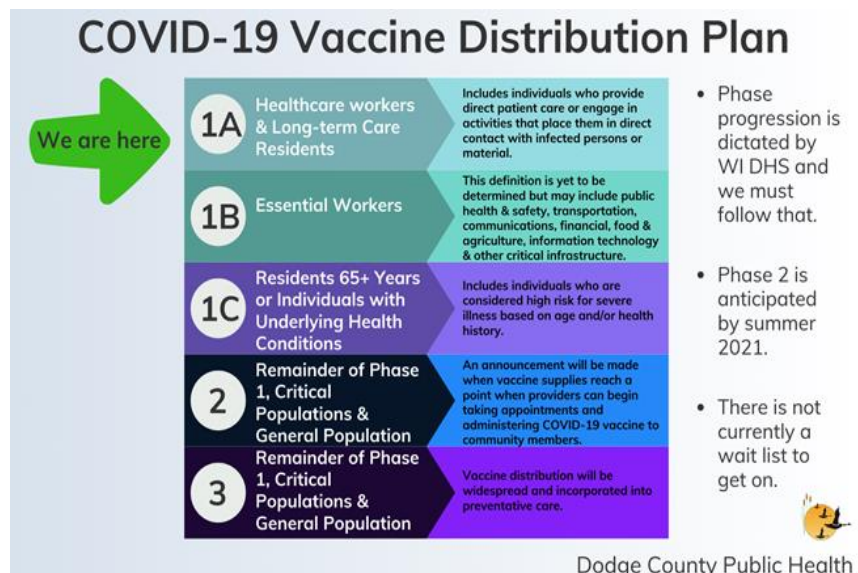
BadgerCare Plus Local Consortium Contact Information

Bay Lake Consortium: 1-888-794-5747	Brown, Door, Marinette, Oconto, Shawano
Capital Consortium: 1-888-794-5556	Adams, Columbia, Dane, Dodge, Juneau, Richland, Sauk
East Central IM Partnership: 1-888-256-4563	Calumet, Green Lake, Kewaunee, Manitowoc, Marquette, Outagamie, Sheboygan, Waupaca, Waushara, Winnebago
Great Rivers Consortium: 1-888-283-0012	Barron, Burnett, Chippewa, Douglas, Dunn, Eau Claire, Pierce, Polk, St. Croix, Washburn
IM Central Consortium: 1-888- 445-1621	Langlade, Marathon, Oneida, Portage
Milwaukee Enrollment Service (MIIES): 1-888-947-6583	Milwaukee
Moraine Lakes Consortium: 1-888-446-1239	Fond du Lac, Ozaukee, Walworth, Washington, Waukesha
Northern IM Consortium: 1-888-794-5722	Ashland, Bayfield, Florence, Forest, Iron, Lincoln, Price, Rusk, Sawyer, Taylor, Vilas, Wood
Southern Consortium: 1-888-794-5780	Crawford, Grant, Green, Iowa, Jefferson, Lafayette, Rock
Western Region for Economic Assistance: 1-888-627-0430	Buffalo, Clark, Jackson, La Crosse, Monroe, Pepin, Trempealeau, Vernon
WKR: 1-888-794-5820	Kenosha, Racine

A message from Dodge County Public Health Department:
Dear Dodge County Residents and Community Members,

- We know the top question on everyone’s minds lately is “When can I get the COVID-19 vaccine?” Dodge County Public Health added a “COVID-19 Vaccination Information” tab to the Dodge County Website under Coronavirus information. This page will be updated regularly when new information is available.
 - <https://www.co.dodge.wi.gov/departments/departments-e-m/human-services-health-department/coronavirus-information/covid-19-vaccination>
 - Please refer to this page when looking for the most up to date information about the vaccination status in Dodge County, WI
- Wisconsin and Dodge County are currently in the Phase 1A part of the Vaccine Distribution Plan. Phase 1A includes individuals who provide direct patient care or engage in activities that place them in direct contact with infected persons or material. The Wisconsin Department of Health Services announced on January 11, 2021, that Police and Fire personnel will be eligible for the COVID-19 vaccine beginning January 18, 2021, which begins the first step into phase 1B for Wisconsin.
 - People that fall into Phase 1A, Police, or Fire Personnel should speak to their specific employer or agency about getting scheduled for the vaccine. Public health is coordinating with those agencies to determine eligible workers.
 - If you do not fall into either of those categories, we ask that you remain patient and vigilant with public health mitigation methods. There is not a wait-list to get on for future availability of the vaccine.

Katie Breitlow, RN
Randolph School District Nurse





Randolph Public School
2021 Breakfast Menu



Monday	Tuesday	Wednesday	Thursday	Friday
1 Cereal Bar or Pop Tart String Cheese Juice Peaches	2 UBR Breakfast Cookie or Cereal Bowl String Cheese Banana	3 Banana Chocolate Chunk Breakfast Bar or Cereal Bowl Juice Flavored Applesauce	4 Grape/Chocolate Crescent Rolls or Cereal Bowl String Cheese Pear	5 Egg & Cheese Sandwich or Cereal Bowl Banana
8 Mini Bagels with Cream Cheese or Cereal Bowl Juice Peaches	9 Cinnamon Toast Crunch Filled Breakfast Bar or Cereal Bowl Raisins Applesauce Cup	10 Cheese Omelet or Cereal Bowl Yogurt Cup Banana	11 Sausage Egg Croissant or Cereal Bowl Juice Mixed Berry Cup	12 Muffin Top or Cereal Bowl String Cheese Banana
15 Cereal Bar or Pop Tart String Cheese Juice Peaches	16 UBR Breakfast Cookie or Cereal Bowl String Cheese Banana	17 Oatmeal Chocolate Chip Breakfast Bar or Cereal Bowl Juice Flavored Applesauce	18 Apple/Cherry Frudel or Cereal Bowl String Cheese Banana	19 Teacher In-Service 
22 Cinnamon Roll or Cereal Bowl Juice Peaches	23 Cinnamon Toast Crunch Filled Breakfast Bar or Cereal Bowl Raisins Applesauce Cup	24 Cheese Omelet or Cereal Bowl Yogurt Cup Banana	25 Sausage Egg Croissant or Cereal Bowl Juice Mixed Berry Cup	26 Muffin Top or Cereal Bowl String Cheese Banana

*Offered Daily: 1%, Skim, and Chocolate Milk

*Menus are subject to change without notice


*USDA is an equal opportunity provider and employer



FEBRUARY

Randolph Public School
2021 Lunch Menu



Monday	Tuesday	Wednesday	Thursday	Friday
<p>1</p> <p>Chicken Patty Cheesy Broccoli Smiley Fries Mandarin Oranges ALT: PB&J</p>	<p>2</p> <p>Pizza Dippers Pizza Sauce Cucumbers Pineapple Peaches ALT: Ham & Cheese Sandwich</p>	<p>3</p> <p>Mac 'n' Cheese Pretzel Bites Seasoned Green Beans Pepper Strips Apple ALT:Hamburger</p>	<p>4</p> <p>Chicken & Gravy Mashed Potatoes Corn Dinner Roll Grapes ALT: Turkey & Cheese Sandwich</p>	<p>5</p> <p>Build Your Own Burger Baked Beans French Fries Bananas ALT: Cheese Pizza</p>
<p>8</p> <p>Tater Tot Casserole Peas/Carrots Peaches Birthday Cake Graham Crackers ALT: PB&J</p>	<p>9</p> <p>Taco Tuesday Salsa Lettuce Refried Beans Orange Slices ALT: Ham & Cheese Sandwich</p>	<p>10</p> <p>Cheese or Pepperoni Stuffed Crust Pizza Baby Carrots Pineapple Banana ALT:Hamburger</p>	<p>11</p> <p>Cheesy Baked Ziti Parmesan Cheese Pepper Strips Steamed Broccoli Spiced Apples ALT: Turkey & Cheese Sandwich</p>	<p>12</p> <p>French Toast Sticks Sausage Links Yogurt & Granola Blueberries Baby Carrots Sidekick Fruit Slushie ☑ ALT: Cheese Pizza</p>
<p>15</p> <p>Chicken Patty Cheesy Broccoli Smiley Fries Mandarin Oranges ALT: PB&J</p>	<p>16</p> <p>Pizza Dippers Pizza Sauce Cucumbers Pineapple Peaches ALT: Ham & Cheese Sandwich</p>	<p>17</p> <p>Mac 'n' Cheese Pretzel Bites Seasoned Green Beans Pepper Strips Apple ALT:Hamburger</p>	<p>18</p> <p>Chicken & Gravy Mashed Potatoes Corn Dinner Roll Grapes ALT: Turkey & Cheese Sandwich</p>	<p>19</p> <p>Teacher In-Service </p>
<p>22</p> <p>Tater Tot Casserole Peas/Carrots Peaches Birthday Cake Graham Crackers ALT: PB&J</p>	<p>23</p> <p>Nachos Bel Grande Salsa Lettuce Refried Beans Orange Slices ALT: Ham & Cheese Sandwich</p>	<p>24</p> <p>Cheese or Pepperoni Stuffed Crust Pizza Baby Carrots Pineapple Banana ALT:Hamburger</p>	<p>25</p> <p>Chicken Fajitas/Fajita Rice Bowls Pepper Strips Fajita Veggies Apples ALT: Turkey & Cheese Sandwich</p>	<p>26</p> <p>Hot Dogs Baked Beans French Fries Banana ALT: Fish Sandwich</p>

REMS Alternate Main Entree

Monday: Bologna Sandwich
Tuesday: Ham Sandwich
Wednesday: Cheese Sandwich & Yogurt Cup
Thursday: Turkey Sandwich
Friday: Peanut Butter & Jelly Uncrustable & String Cheese

*The **bold text** is the main entree offered to all students
 *Offered Daily: 1%, Skim, and Chocolate Milk
 *Menus are subject to change without notice
 *ALT menu items for high school students only
 *USDA is an equal opportunity provider and employer